

ISO

Dimensions:
8 mm



ISO color code

AXI 80°/110° Extended range flat fan nozzle

MAIN CHARACTERISTICS

- › Designed to be used over a wide range of pressures (from 15 to 60 psi).
- › Recommended for use at low pressure (around 15 psi) for low volume applications and spray drift reduction (bigger droplets).
- › May be used at higher pressure (above 30 psi) to improve target coverage (finer droplets).
- › Excellent for sprayers equipped with automated flow rate controllers (pressure changes do not affect the spray distribution).

SPECIFIC CHARACTERISTICS

- › Ceramic insert in a high resistance plastic body.
- › Adapted to any brand of sprayer.
- › Flow rate characteristics, body size and color code meet international ISO standards.
- › Flat fan pattern, droplet size varies according to pressure.
- › **Minimum boom height recommended: 20 inches (110 degrees) and 30 inches (80 degrees).**
- › **Minimum pressure: 15 - 20 psi.**

AVAILABLE IN FAST CAP [Ref. : FAXI]

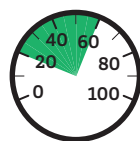


FLOW RATE CHART

Color	ISO Code	Pressure (psi)	80°	110°	gpm	Gallons / acre - Nozzle spacing: 20 inches							
						4 mph	5 mph	6 mph	8 mph	10 mph	12 mph	16 mph	20 mph
GREEN	AXI 110015 80015	15	F	F	0.09	6.8	5.5	4.6	3.4	2.7	2.3	1.7	1.4
		20	F	F	0.11	8.2	6.5	5.4	4.1	3.3	2.7	2.0	1.6
		30	F	F	0.13	9.9	7.9	6.6	4.9	4.0	3.3	2.5	2.0
		40	F	F	0.15	11.1	8.9	7.4	5.6	4.5	3.7	2.8	2.2
		50	F	F	0.17	12.7	10.2	8.5	6.3	5.1	4.2	3.2	2.5
		60	F	F	0.18	13.4	10.7	8.9	6.7	5.3	4.5	3.3	2.7
YELLOW	AXI 11002 8002	15	F	F	0.12	8.9	7.1	5.9	4.5	3.6	3.0	2.2	1.8
		20	F	F	0.14	10.4	8.3	6.9	5.2	4.2	3.5	2.6	2.1
		30	F	F	0.17	12.6	10.1	8.4	6.3	5.0	4.2	3.2	2.5
		40	F	F	0.20	14.9	11.9	9.9	7.4	5.9	5.0	3.7	3.0
		50	F	F	0.22	16.3	13.1	10.9	8.2	6.5	5.4	4.1	3.3
		60	F	F	0.24	17.8	14.3	11.9	8.9	7.1	5.9	4.5	3.6
PURPLE	AXI 110025 80025	15	M	M	0.15	11.1	8.9	7.4	5.6	4.5	3.7	2.8	2.2
		20	M	M	0.18	13.4	10.7	8.9	6.7	5.3	4.5	3.3	2.7
		30	M	M	0.22	16.5	13.2	11.0	8.2	6.6	5.5	4.1	3.3
		40	M	M	0.25	18.6	14.9	12.4	9.3	7.4	6.2	4.6	3.7
		50	M	M	0.28	20.8	16.6	13.9	10.4	8.3	6.9	5.2	4.2
		60	F	F	0.31	23.3	18.7	15.5	11.7	9.3	7.8	5.8	4.7
BLUE	AXI 11003 8003	15	M	M	0.18	13.4	10.7	8.9	6.7	5.3	4.5	3.3	2.7
		20	M	M	0.21	15.6	12.5	10.4	7.8	6.2	5.2	3.9	3.1
		30	M	M	0.26	19.3	15.4	12.9	9.7	7.7	6.4	4.8	3.9
		40	M	M	0.30	22.3	17.8	14.9	11.1	8.9	7.4	5.6	4.5
		50	M	M	0.34	25.5	20.4	17.0	12.7	10.2	8.5	6.4	5.1
		60	F	F	0.37	27.5	22.0	18.3	13.7	11.0	9.2	6.9	5.5
RED	AXI 11004 8004	15	M	M	0.24	17.8	14.3	11.9	8.9	7.1	5.9	4.5	3.6
		20	M	M	0.28	20.8	16.6	13.9	10.4	8.3	6.9	5.2	4.2
		30	M	M	0.35	26.3	21.0	17.5	13.1	10.5	8.8	6.6	5.3
		40	M	M	0.40	29.7	23.8	19.8	14.9	11.9	9.9	7.4	5.9
		50	M	M	0.45	33.4	26.7	22.3	16.7	13.4	11.1	8.4	6.7
		60	M	M	0.49	36.4	29.1	24.3	18.2	14.6	12.1	9.1	7.3
BROWN	AXI 11005 8005	15	C	M	0.31	23.0	18.4	15.3	11.5	9.2	7.7	5.8	4.6
		20	M	M	0.35	26.0	20.8	17.3	13.0	10.4	8.7	6.5	5.2
		30	M	M	0.43	31.9	25.5	21.3	16.0	12.8	10.6	8.0	6.4
		40	M	M	0.50	37.1	29.7	24.8	18.6	14.9	12.4	9.3	7.4
		50	M	M	0.56	41.6	33.3	27.7	20.8	16.6	13.9	10.4	8.3
		60	M	M	0.61	45.3	36.2	30.2	22.6	18.1	15.1	11.3	9.1
GREY	AXI 11006 8006	15	C	C	0.37	27.5	22.0	18.3	13.7	11.0	9.2	6.9	5.5
		20	C	M	0.42	31.2	24.9	20.8	15.6	12.5	10.4	7.8	6.2
		30	C	M	0.52	38.6	30.9	25.7	19.3	15.4	12.9	9.7	7.7
		40	M	M	0.60	44.6	35.6	29.7	22.3	17.8	14.9	11.1	8.9
		50	M	M	0.67	49.7	39.8	33.2	24.9	19.9	16.6	12.4	9.9
		60	M	M	0.73	54.2	43.4	36.1	27.1	21.7	18.1	13.6	10.8
WHITE	AXI 11008 8008	15	VC	VC	0.49	36.4	29.1	24.3	18.2	14.6	12.1	9.1	7.3
		20	VC	C	0.57	42.3	33.9	28.2	21.2	16.9	14.1	10.6	8.5
		30	C	C	0.69	51.2	41.0	34.2	25.6	20.5	17.1	12.8	10.2
		40	C	C	0.80	59.4	47.5	39.6	29.7	23.8	19.8	14.9	11.9
		50	M	M	0.89	66.1	52.9	44.1	33.0	26.4	22.0	16.5	13.2
		60	M	M	0.98	72.8	58.2	48.5	36.4	29.1	24.3	18.2	14.6

APPLICATIONS

All types of treatments (herbicides, fungicides, insecticides...).



20-60 psi



80° / 110°

15 psi



40 psi