

OTHER APPLICATIONS



ALBUZ catalog 2020

Compact Air induction
off center
spray nozzle

CVI-OC

Iso body dimensions : 8mm

ISO



ISO color code

SPECIFIC CHARACTERISTICS

- > Air induction nozzle (venturi system) : sprays large drops filled with air bubbles, which do not drift and burst to form finer droplets on contact with the plant.
- > Almost totally eliminates drift, while increasing the number of impacts (excellent coverage of treated zone).
- > Improve applications near sensitive areas when used on boom end (see picture 1).
- > Improve applications near sensitive areas when used on boom end (see picture 1 and picture 2 below).
- > **Minimum pressure : 20 - 30 psi.**

MAIN CHARACTERISTICS

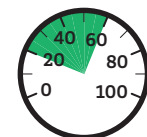
- > Designed to be used over a wide range of pressures (from 20 to 40 psi).
- > Pink Albuz ceramic orifice (excellent precision and high wear resistance).
- > Flat fan pattern, 80 degree spray angle.
- > Designed for all types of nozzle holders using the same cap as AXI nozzle.

FLOW RATE CHART

Color	ISO code	Mesh	Pressure (psi)	Drop	gpm	Gallons / acre - nozzle spacing: 20 inches							
						4 mph	5 mph	6 mph	8 mph	10 mph	12 mph	16 mph	20 mph
YELLOW	CVI 80 02	100	20	XC	0.14	10.4	8.3	6.9	5.2	4.2	3.5	2.6	2.1
			30	XC	0.17	12.6	10.1	8.4	6.3	5.0	4.2	3.2	2.5
			40	XC	0.20	14.9	11.9	9.9	7.4	5.9	5.0	3.7	3.0
			50	XC	0.22	16.3	13.1	10.9	8.2	6.5	5.4	4.1	3.3
			60	VC	0.24	17.8	14.3	11.9	8.9	7.1	5.9	4.5	3.6
PURPLE	CVI 80 025	50	20	XC	0.18	13.4	10.7	8.9	6.7	5.3	4.5	3.3	2.7
			30	XC	0.22	16.5	13.2	11.0	8.2	6.6	5.5	4.1	3.3
			40	XC	0.25	18.6	14.9	12.4	9.3	7.4	6.2	4.6	3.7
			50	XC	0.28	20.8	16.6	13.9	10.4	8.3	6.9	5.2	4.2
			60	VC	0.31	23.3	18.7	15.5	11.7	9.3	7.8	5.8	4.7
BLUE	CVI 80 03	50	20	XC	0.21	15.6	12.5	10.4	7.8	6.2	5.2	3.9	3.1
			30	XC	0.26	19.3	15.4	12.9	9.7	7.7	6.4	4.8	3.9
			40	XC	0.30	22.3	17.8	14.9	11.1	8.9	7.4	5.6	4.5
			50	VC	0.34	25.5	20.4	17.0	12.7	10.2	8.5	6.4	5.1
			60	C	0.37	27.5	22.0	18.3	13.7	11.0	9.2	6.9	5.5
			75	C	0.41	30.4	24.4	20.3	15.2	12.2	10.1	7.6	6.1

APPLICATIONS

All types of treatments (systemic and contact products) including fertilizers.



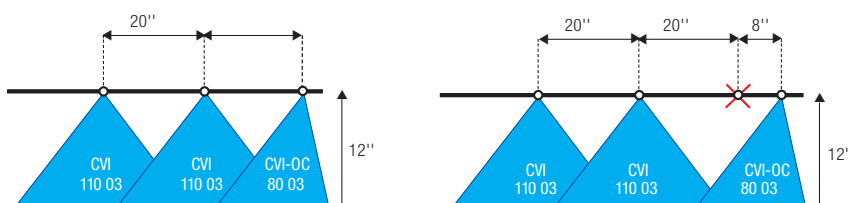
20-60 psi



TREATMENT ON BOOM

Standard

Optimum



TREATMENT ON PLANTS

