



Dimensions:
8 mm

ISO

Compact air induction
flat spray nozzle

CVI 80°



ISO color code

SPECIFIC CHARACTERISTICS

- > Air induction nozzle (venturi system) : sprays large drops filled with air bubbles, which do not drift and burst to form finer droplets on contact with the plant.
- > Increase retention of the product on the foliage, and reduce product losses to the ground.
- > Dramatically reduces drift, while enhancing the number of impacts of product on the target, (excellent coverage of the treated zones).
- > Anti-clogging design and double air-intake orifices.
- > Compact design (length 0.87 inch) adapted to all booms and nozzle holders.
- > **Recommended operating pressures: between 150 and 200 psi.**

MAIN CHARACTERISTICS

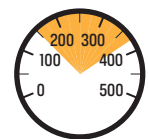
- > **Designed to be used over a wide range of pressures (from 150 and 200 psi).**
- > Pink ALBUZ® ceramic orifice (excellent precision and high wear resistance).
- > Flat fan pattern, angle of 80 degree at 40 psi.
- > Can be used for tree canopies up to 25 feet.

FLOW RATE CHART [gpm]

Pressure (psi)	ORANGE 8001	GREEN 80015	YELLOW 8002	PURPLE 80025	BLUE 8003	RED 8004	BROWN 8005	GREY 8006
	100 Mesh	100 Mesh	100 Mesh	50 Mesh	50 Mesh	50 Mesh	50 Mesh	50 Mesh
150	0.194	0.290	0.387	0.484	0.581	0.775	0.968	1.162
160	0.2	0.300	0.400	0.500	0.6	0.800	1.000	1.200
170	0.206	0.309	0.412	0.515	0.618	0.83	1.031	1.237
190	0.218	0.327	0.436	0.545	0.654	0.872	1.090	1.308
200	0.224	0.335	0.447	0.559	0.671	0.894	1.118	1.342
220	0.235	0.352	0.469	0.586	0.704	0.938	1.173	1.407
230	0.24	0.36	0.48	0.599	0.719	0.959	1.199	1.439
250	0.25	0.375	0.5	0.625	0.75	1	1.25	1.50
260	0.255	0.382	0.51	0.637	0.765	1.02	1.275	1.530
280	0.265	0.397	0.529	0.661	0.794	1.058	1.323	1.587
290	0.269	0.404	0.539	0.673	0.808	1.077	1.346	1.616
300	0.274	0.411	0.548	0.685	0.822	1.095	1.369	1.643
320	0.283	0.424	0.566	0.707	0.849	1.131	1.414	1.697
330	0.287	0.431	0.574	0.718	0.862	1.149	1.436	1.723
350	0.296	0.444	0.592	0.740	0.887	1.183	1.48	1.775
360	0.3	0.450	0.600	0.750	0.9	1.2	1.5	1.8

APPLICATIONS

Particularly recommended for the application of systemic and contact products.



150-360 psi



80°

