

BROADCAST APPLICATIONS



ALBUZ

catalog 2020

Low pressure
Air induction
Twin fan spray nozzle

CVI-TWIN

Dimensions: 8 mm

ISO



ISO color code

SPECIFIC CHARACTERISTICS

- > The orientation of the spray patterns improves canopy penetration.
- > Air induction nozzle (venturi system) : sprays large drops filled with air bubbles, which do not drift and burst to form finer droplets on contact with the plant.
- > Anti-clogging design and double air-intake orifice.
- > Compact design (0.86 inch length) adapted to all booms and nozzles-holders.
- > **Minimum height boom recommended: 20 inches.**
- > **Minimum pressure: 20 psi.**
- > **Use 100 mesh filters for green (015) and yellow (02) models.**

MAIN CHARACTERISTICS

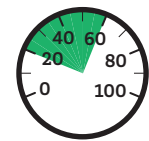
- > **Designed to be used over a wide range of pressures (from 20 to 60 psi).**
- > Pink ALBUZ® ceramic double-orifices (excellent precision and high wear resistance).
- > 110 degree flat fan pattern. Overlap required to ensure uniform distribution on the target.
- > Designed for all types of nozzle bodies, using the same cap as ISO nozzles (for example: AXI).

FLOW RATE CHART

Color	ISO code	Mesh	Pressure (psi)	Drop Size	gpm	Gallons / acre - nozzle spacing: 20 inches							
						7 mph	8 mph	9 mph	10 mph	12 mph	14 mph	18 mph	22 mph
GREEN	CVI-TWIN 110015	100	20	XC	0.11	8.2	6.5	5.4	4.1	3.3	2.7	2.0	1.6
			30	XC	0.13	9.9	7.9	6.6	4.9	4.0	3.3	2.5	2.0
			40	VC	0.15	11.1	8.9	7.4	5.6	4.5	3.7	2.8	2.2
			50	VC	0.17	12.7	10.2	8.5	6.3	5.1	4.2	3.2	2.5
			60	C	0.18	13.4	10.7	8.9	6.7	5.3	4.5	3.3	2.7
			75	M	0.21	15.6	12.5	10.4	7.8	6.2	5.2	3.9	3.1
YELLOW	CVI-TWIN 11002	100	20	XC	0.14	10.4	8.3	6.9	5.2	4.2	3.5	2.6	2.1
			30	VC	0.17	12.6	10.1	8.4	6.3	5.0	4.2	3.2	2.5
			40	VC	0.20	14.9	11.9	9.9	7.4	5.9	5.0	3.7	3.0
			50	C	0.22	16.3	13.1	10.9	8.2	6.5	5.4	4.1	3.3
			60	C	0.24	17.8	14.3	11.9	8.9	7.1	5.9	4.5	3.6
			90	M	0.30	22.3	17.8	14.9	11.1	8.9	7.4	5.6	4.5
PURPLE	CVI-TWIN 110025	50	20	XC	0.18	13.4	10.7	8.9	6.7	5.3	4.5	3.3	2.7
			30	XC	0.22	16.5	13.2	11.0	8.2	6.6	5.5	4.1	3.3
			40	XC	0.25	18.6	14.9	12.4	9.3	7.4	6.2	4.6	3.7
			50	VC	0.28	20.8	16.6	13.9	10.4	8.3	6.9	5.2	4.2
			60	VC	0.31	23.3	18.7	15.5	11.7	9.3	7.8	5.8	4.7
			90	C	0.38	28.2	22.6	18.8	14.1	11.3	9.4	7.1	5.6
BLUE	CVI-TWIN 11003	50	20	XC	0.21	15.6	12.5	10.4	7.8	6.2	5.2	3.9	3.1
			30	XC	0.26	19.3	15.4	12.9	9.7	7.7	6.4	4.8	3.9
			40	VC	0.30	22.3	17.8	14.9	11.1	8.9	7.4	5.6	4.5
			50	VC	0.34	25.5	20.4	17.0	12.7	10.2	8.5	6.4	5.1
			60	C	0.37	27.5	22.0	18.3	13.7	11.0	9.2	6.9	5.5
			90	C	0.45	33.4	26.7	22.3	16.7	13.4	11.1	8.4	6.7
RED	CVI-TWIN 11004	50	20	XC	0.28	20.8	16.6	13.9	10.4	8.3	6.9	5.2	4.2
			30	XC	0.35	26.3	21.0	17.5	13.1	10.5	8.8	6.6	5.3
			40	VC	0.40	29.7	23.8	19.8	14.9	11.9	9.9	7.4	5.9
			50	VC	0.45	33.4	26.7	22.3	16.7	13.4	11.1	8.4	6.7
			60	C	0.49	36.4	29.1	24.3	18.2	14.6	12.1	9.1	7.3
			90	C	0.60	44.6	35.6	29.7	22.3	17.8	14.9	11.1	8.9
BROWN	CVI-TWIN 11005	50	20	VC	0.35	26.0	20.8	17.3	13.0	10.4	8.7	6.5	5.2
			30	VC	0.43	31.9	25.5	21.3	16.0	12.8	10.6	8.0	6.4
			40	C	0.50	37.1	29.7	24.8	18.6	14.9	12.4	9.3	7.4
			50	C	0.56	41.6	33.3	27.7	20.8	16.6	13.9	10.4	8.3
			60	C	0.61	45.3	36.2	30.2	22.6	18.1	15.1	11.3	9.1
			90	M	0.75	55.7	44.6	37.1	27.8	22.3	18.6	13.9	11.1

APPLICATIONS

All types of treatment (systemic and contact products) including liquid fertilizers.



20-60 psi

