



ORCHARD
VINEYARD

catalog 2020

ALBUZ

DISC & CORE Ceramic hollow-cone nozzle

SPECIFIC CHARACTERISTICS

- > ALBUZ® durable pink ceramic construction allows high spraying pressures to be used while maintaining performance and precision.
- > Hollow cone nozzle spraying fine droplets.
- > The combinations of Discs (AD) and Cores (AC) allow a wide choice of uses.

- > **Recommended pressure: 150 -250 psi.**
- > Information about droplet size (see page 5)

HOLLOW CONE TABLE

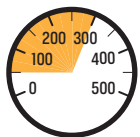
Disc	Core	Orifice diameters (inches)	gpm							Angles	
			40 psi	60 psi	80 psi	100 psi	150 psi	200 psi	300 psi	150 psi	300 psi
AD 1	AC 13	0.036 "	0.066	0.078	0.088	0.097	0.115	0.128	0.152	66°	68°
AD 2	AC 13	0.041 "	0.08	0.10	0.11	0.12	0.14	0.16	0.18	74°	75°
AD 3	AC 13	0.047 "	0.09	0.11	0.12	0.13	0.16	0.18	0.20	77°	78°
AD 4	AC 13	0.063 "	0.12	0.14	0.16	0.17	0.20	0.23	0.27	84°	85°
AD 1	AC 23	0.036 "	0.072	0.080	0.096	0.107	0.124	0.139	0.164	63°	65°
AD 2	AC 23	0.041 "	0.10	0.13	0.14	0.16	0.19	0.21	0.25	72°	72°
AD 3	AC 23	0.047 "	0.12	0.14	0.16	0.18	0.21	0.24	0.28	77°	77°
AD 4	AC 23	0.063 "	0.15	0.19	0.21	0.23	0.28	0.32	0.38	88°	87°
AD 5	AC 23	0.078 "	0.18	0.22	0.25	0.28	0.34	0.38	0.46	96°	95°
AD 6	AC 23	0.094 "	0.21	0.26	0.29	0.32	0.39	0.45	0.54	100°	99°
AD 1	AC 25	0.036 "	0.101	0.122	0.138	0.156	0.185	0.210	0.255	49°	51°
AD 2	AC 25	0.041 "	0.16	0.19	0.22	0.25	0.29	0.34	0.41	61°	61°
AD 3	AC 25	0.047 "	0.19	0.23	0.26	0.29	0.35	0.40	0.48	69°	69°
AD 4	AC 25	0.063 "	0.29	0.35	0.40	0.45	0.54	0.62	0.75	82°	82°
AD 5	AC 25	0.078 "	0.35	0.42	0.48	0.54	0.65	0.75	0.90	85°	84°
AD 6	AC 25	0.094 "	0.44	0.54	0.62	0.70	0.85	0.97	1.19	89°	88°
AD 7	AC 25	0.125 "	0.52	0.63	0.73	0.81	0.98	1.18	1.37	92°	91°
AD 1	AC 45	0.036 "	0.125	0.148	0.170	0.190	0.225	0.257	0.310	39°	40°
AD 2	AC 45	0.041 "	0.20	0.25	0.28	0.32	0.38	0.44	0.53	58°	58°
AD 3	AC 45	0.047 "	0.23	0.28	0.33	0.36	0.44	0.51	0.62	62°	62°
AD 4	AC 45	0.063 "	0.36	0.43	0.50	0.56	0.68	0.78	0.95	73°	72°
AD 5	AC 45	0.078 "	0.45	0.55	0.64	0.71	0.86	0.99	1.22	76°	75°
AD 6	AC 45	0.094 "	0.58	0.72	0.83	0.93	1.15	1.33	1.64	80°	79°
AD 7	AC 45	0.125 "	0.68	0.84	0.97	1.11	1.35	1.57	1.94	86°	85°
AD 1	AC 46	0.036 "	0.145	0.178	0.205	0.23	0.28	0.32	0.39	17°	17°
AD 2	AC 46	0.041 "	0.27	0.33	0.37	0.42	0.50	0.57	0.68	20°	18°
AD 3	AC 46	0.047 "	0.32	0.39	0.45	0.51	0.61	0.70	0.86	23°	21°
AD 4	AC 46	0.063 "	0.56	0.68	0.78	0.88	1.07	1.23	1.52	32°	31°
AD 5	AC 46	0.078 "	0.77	0.94	1.10	1.25	1.50	1.73	2.13	41°	40°
AD 6	AC 46	0.094 "	1.10	1.35	1.58	1.73	2.16	2.50	3.06	49°	47°
AD 7	AC 46	0.125 "	1.39	1.72	1.97	2.22	2.73	3.15	3.85	55°	53°

FULL CONE TABLE

Disc	Core	Orifice diameters (inches)	gpm							Angles	
			40 psi	60 psi	80 psi	100 psi	150 psi	200 psi	300 psi	150 psi	300 psi
AD 1	AC 31	0.36 "	-	-	-	-	0.277	0.314	0.373	38°	40°
AD 2	AC 31	0.41 "	-	-	-	-	0.401	0.454	0.540	49°	54°
AD 3	AC 31	0.47 "	-	-	-	-	0.429	0.485	0.578	58°	67°
AD 1	AC 35	0.36 "	-	-	-	-	0.260	0.294	0.350	27°	27°
AD 2	AC 35	0.41 "	-	-	-	-	0.455	0.515	0.614	40°	45°
AD 3	AC 35	0.47 "	-	-	-	-	0.538	0.609	0.725	42°	48°
AD 4	AC 35	0.63 "	-	-	-	-	0.943	1.067	1.270	60°	68°
AD 5	AC 35	0.78 "	0.691	0.809	0.905	0.988	1.157	1.294	1.516	62°	69°
AD 2	AC 56	0.41 "	0.251	0.294	0.329	0.359	0.420	0.470	0.551	16°	18°
AD 3	AC 56	0.47 "	0.356	0.417	0.467	0.509	0.596	0.667	0.781	22°	24°
AD 4	AC 56	0.63 "	0.586	0.686	0.768	0.838	0.981	1.098	1.286	28°	30°
AD 5	AC 56	0.78 "	0.817	0.957	1.071	1.168	1.368	1.530	1.793	33°	35°
AD 6	AC 56	0.94 "	1.236	1.448	1.620	1.767	2.070	2.315	2.712	38°	40°
AD 7	AC 56	0.125 "	1.613	1.889	2.114	2.306	2.701	3.022	3.539	51°	53°

APPLICATIONS

All types of treatments (herbicides, fungicides, insecticides ...)



40-300 psi



Full cone