



Air Induction
Hollow Cone
spray nozzle

TVI 80°



SPECIFIC CHARACTERISTICS

- > Easy dismantling for cleaning.
- > 3 ceramic components for greater wear resistance.
- > Can be used on a boom from a pressure of 70 psi using a special quick-connect cap.
- > Compact size: length 0.74 inches.
- > **Recommended pressure for airblast sprayers: 150 - 300 psi.**
- > Information about droplet size (see page 5)

MAIN CHARACTERISTICS

- > 80 degree angle at 70 psi.
- > Air induction nozzle (venturi system) : sprays large drops filled with air bubbles, which do not drift and burst to form finer droplets on contact with the plant.
- > ALBUZ® durable pink ceramic allows high spraying pressures to be used while maintaining performance and precision.

NEW

3 low pressure nozzles

Purple, pink and orange

TVI LP

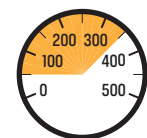
IMPORTANT ! Use 200 mesh nozzle filters for models 80 0050 - 80 0075 and 100 mesh filters for the other sizes.

FLOW RATE CHART (Gpm)

psi	LILAC 80-0050	PINK 80-0075	ORANGE 80-01	GREEN 80-015	YELLOW 80-02	PURPLE 80-025	BLUE 80-03	RED 80-04
40	0.050	0.075	0.100					
50	0.056	0.084	0.112					
60	0.061	0.092	0.122					
70	0.066	0.099	0.132	0.198	0.265	0.331	0.397	0.529
80	0.071	0.106	0.141	0.212	0.283	0.354	0.424	0.566
90	0.075	0.113	0.2	0.225	0.3	0.375	0.45	0.6
100	0.079	0.119	0.158	0.237	0.316	0.395	0.474	0.632
110	0.083	0.124	0.166	0.249	0.332	0.415	0.497	0.663
120	0.087	0.130	0.173	0.26	0.346	0.433	0.52	0.693
130	0.09	0.14	0.180	0.27	0.361	0.451	0.541	0.721
140	0.094	0.140	0.187	0.281	0.374	0.468	0.561	0.748
150	0.097	0.145	0.194	0.29	0.387	0.484	0.581	0.775
160	0.1	0.15	0.2	0.3	0.4	0.5	0.6	0.8
170	0.103	0.155	0.206	0.309	0.412	0.515	0.618	0.825
180	0.106	0.159	0.212	0.318	0.424	0.53	0.636	0.849
200	0.112	0.168	0.224	0.335	0.447	0.559	0.671	0.894
220	0.117	0.176	0.235	0.352	0.469	0.586	0.704	0.938
240	0.122	0.184	0.25	0.367	0.49	0.612	0.735	0.98
260	0.127	0.191	0.26	0.382	0.51	0.637	0.765	1.02
280	0.132	0.198	0.265	0.397	0.529	0.661	0.794	1.058
300	0.137	0.205	0.274	0.411	0.548	0.685	0.822	1.095
320	0.141	0.212	0.283	0.424	0.566	0.707	0.849	1.131
340	0.146	0.219	0.292	0.437	0.583	0.729	0.875	1.166

APPLICATIONS

For fungicide and insecticide treatments. Recommended for orchard and vineyards.



40-340 psi

