



European Color code

# ATR 80° Hollow cone nozzle

## MAIN CHARACTERISTICS

- > Angle of 80 degree at 70 psi.
- > Hollow cone nozzle producing fine droplets.
- > ALBUZ® durable pink ceramic allows high pressure spraying while maintaining nozzle performance and precision.

## SPECIFIC CHARACTERISTICS

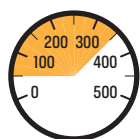
- > Easy dismantling for cleaning.
- > Julius Kuhn Institute certified.
- > Can be used on a sprayer boom from 40 psi.
- > Precision polished ceramic surfaces of internal components ensure perfect sealing of the swirl chamber to give precise flowrate.
- > **Recommended pressure for airblast sprayers: 150 - 250 psi.**
- > Information about droplet size (see page 5)

FLOW RATE CHART (gpm)

Pressure (psi)	WHITE	LILAC	BROWN	YELLOW	ORANGE	RED	GREY	GREEN	BLACK	BLUE	PURPLE
40	0.054	0.073	0.097	0.147	0.2	0.28	0.304	0.361	0.405	0.496	0.619
50	0.060	0.081	0.108	0.164	0.223	0.311	0.338	0.401	0.450	0.552	0.688
60	0.066	0.088	0.118	0.179	0.243	0.339	0.368	0.437	0.491	0.601	0.749
70	0.071	0.095	0.127	0.193	0.262	0.365	0.396	0.470	0.528	0.647	0.806
80	0.076	0.101	0.135	0.206	0.280	0.389	0.422	0.500	0.562	0.689	0.858
90	0.080	0.107	0.143	0.218	0.296	0.411	0.446	0.529	0.595	0.729	0.908
100	0.084	0.113	0.151	0.230	0.311	0.433	0.468	0.556	0.625	0.766	0.954
110	0.088	0.118	0.158	0.241	0.326	0.453	0.490	0.581	0.654	0.801	0.998
120	0.092	0.123	0.164	0.251	0.340	0.472	0.510	0.606	0.681	0.835	1.039
130	0.095	0.128	0.171	0.261	0.354	0.490	0.530	0.629	0.708	0.867	1.080
140	0.099	0.132	0.177	0.271	0.367	0.508	0.549	0.651	0.733	0.898	1.118
150	0.102	0.137	0.183	0.280	0.379	0.525	0.567	0.673	0.757	0.928	1.155
160	0.105	0.141	0.189	0.289	0.391	0.541	0.584	0.694	0.781	0.957	1.191
170	0.108	0.145	0.194	0.298	0.403	0.557	0.601	0.714	0.804	0.985	1.225
180	0.111	0.149	0.200	0.307	0.414	0.572	0.617	0.733	0.826	1.012	1.259
200	0.117	0.157	0.210	0.323	0.436	0.602	0.649	0.770	0.868	1.064	1.323
220	0.123	0.164	0.220	0.338	0.457	0.629	0.678	0.806	0.908	1.113	1.384
240	0.128	0.171	0.229	0.353	0.476	0.656	0.707	0.839	0.946	1.160	1.442
260	0.133	0.177	0.238	0.367	0.495	0.682	0.734	0.872	0.983	1.205	1.497
280	0.138	0.184	0.247	0.381	0.513	0.706	0.760	0.902	1.018	1.248	1.551
300	0.142	0.190	0.255	0.394	0.531	0.730	0.785	0.932	1.051	1.289	1.602
320	0.147	0.196	0.263	0.407	0.547	0.752	0.809	0.961	1.084	1.329	1.652
340	0.151	0.201	0.271	0.419	0.564	0.774	0.833	0.989	1.116	1.368	1.699

## APPLICATIONS

For fungicides and insecticides. Recommended for orchard and vineyards.



40-340 psi



80°

