



OTHER APPLICATIONS

catalog 2020

ALBUZ

ISO

Specific body dimensions: 11 mm



ISO color code

AVI-OC

Air injected off center nozzle

MAIN CHARACTERISTICS

- > Designed to be used over a wide range of pressures (from 40 to 70 psi).
- > Pink ALBUZ® ceramic orifice (excellent precision and high wear resistance).
- > Flat fan pattern, 80 degree spray angle.

SPECIFIC CHARACTERISTICS

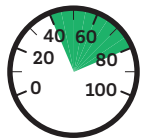
- > Air induction nozzle (venturi system) : sprays large drops filled with air bubbles, which do not drift and burst to form finer droplets on contact with the plant.
- > Almost totally eliminates drift, while increasing the number of impacts (excellent coverage of the treated zone).
- > Improve applications near sensitive areas when used on boom end (see picture 1 and picture 2 below).
- > **Minimum pressure: 40 psi.**

FLOW RATE CHART

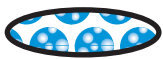
Color	ISO code	Mesh	(psi)	gpm	Gallons / acre - nozzle spacing: 20 inches									
					4 mph	5 mph	6 mph	8 mph	10 mph	12 mph	14 mph	16 mph	20 mph	
ORANGE	AVI-OC 8001	100	40	VC	0.10	7.4	5.9	5.0	3.7	3.0	2.5	2.1	1.9	1.5
			50	VC	0.11	8.2	6.5	5.4	4.1	3.3	2.7	2.3	2.0	1.6
			60	C	0.12	8.9	7.1	5.9	4.5	3.6	3.0	2.5	2.2	1.8
			75	C	0.14	10.4	8.3	6.9	5.2	4.2	3.5	3.0	2.6	2.1
GREEN	AVI-OC 80015	100	40	XC	0.15	11.1	8.9	7.4	5.6	4.5	3.7	3.2	2.8	2.2
			50	VC	0.17	12.7	10.2	8.5	6.3	5.1	4.2	3.6	3.2	2.5
			60	VC	0.18	13.4	10.7	8.9	6.7	5.3	4.5	3.8	3.3	2.7
			75	C	0.21	15.6	12.5	10.4	7.8	6.2	5.2	4.5	3.9	3.1
YELLOW	AVI-OC 8002	100	40	XC	0.20	14.9	11.9	9.9	7.4	5.9	5.0	4.2	3.7	3.0
			50	XC	0.22	16.3	13.1	10.9	8.2	6.5	5.4	4.7	4.1	3.3
			60	VC	0.24	17.8	14.3	11.9	8.9	7.1	5.9	5.1	4.5	3.6
			75	VC	0.27	20.0	16.0	13.4	10.0	8.0	6.7	5.7	5.0	4.0
PURPLE	AVI-OC 80025	50	40	XC	0.25	18.6	14.9	12.4	9.3	7.4	6.2	5.3	4.6	3.7
			50	XC	0.28	20.8	16.6	13.9	10.4	8.3	6.9	5.9	5.2	4.2
			60	VC	0.31	23.3	18.7	15.5	11.7	9.3	7.8	6.7	5.8	4.7
			75	VC	0.34	25.2	20.2	16.8	12.6	10.1	8.4	7.2	6.3	5.0
BLUE	AVI-OC 8003	50	40	XC	0.30	22.3	17.8	14.9	11.1	8.9	7.4	6.4	5.6	4.5
			50	XC	0.34	25.5	20.4	17.0	12.7	10.2	8.5	7.3	6.4	5.1
			60	XC	0.37	27.5	22.0	18.3	13.7	11.0	9.2	7.8	6.9	5.5
			75	VC	0.41	30.4	24.4	20.3	15.2	12.2	10.1	8.7	7.6	6.1
RED	AVI-OC 8004	50	40	XC	0.40	29.7	23.8	19.8	14.9	11.9	9.9	8.5	7.4	5.9
			50	XC	0.45	33.4	26.7	22.3	16.7	13.4	11.1	9.5	8.4	6.7
			60	XC	0.49	36.4	29.1	24.3	18.2	14.6	12.1	10.4	9.1	7.3
			75	VC	0.55	40.8	32.7	27.2	20.4	16.3	13.6	11.7	10.2	8.2
BROWN	AVI-OC 8005	50	40	XC	0.50	37.1	29.7	24.8	18.6	14.9	12.4	10.6	9.3	7.4
			50	XC	0.56	41.6	33.3	27.7	20.8	16.6	13.9	11.9	10.4	8.3
			60	XC	0.61	45.3	36.2	30.2	22.6	18.1	15.1	12.9	11.3	9.1
			75	VC	0.68	50.5	40.4	33.7	25.2	20.2	16.8	14.4	12.6	10.1

APPLICATIONS

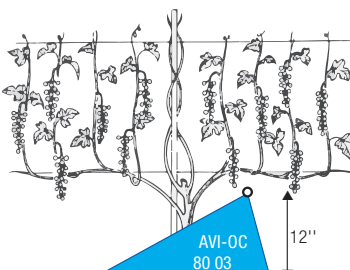
All types of treatments (systemic and contact products) including fertilizers.



40-80 psi



TREATMENT ON PLANTS



TREATMENT ON BOOM

