

BROADCAST APPLICATIONS



ALBUZ

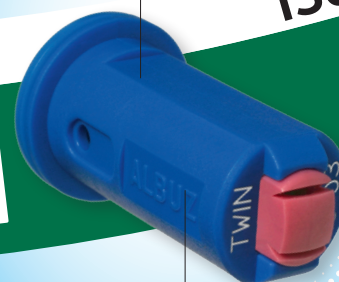
catalog 2020

Air induction Twin fan spray nozzle

AVI-TWIN

Dimensions:
11 mm

ISO



ISO color code

SPECIFIC CHARACTERISTICS

- > The orientation of the spray patterns improves canopy penetration..
- > Air induction nozzle (venturi system) : sprays large drops filled with air bubbles, which do not drift and burst to form finer droplets on contact with the plant.
- > Almost totally eliminates drift, while increasing the number of impacts (excellent coverage of the treated zone).
- > Anti-clogging design and double air-intake orifices.
- > Compact design length (1.10 inch length) fits all booms and nozzle holders.
- > **Minimum height boom recommended: 20 inches.**
- > **Minimum pressure: 40 psi**

MAIN CHARACTERISTICS

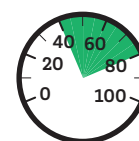
- > Double-orifices pink ALBUZ® ceramic (excellent precision and high wear resistance).
- > Two 110 degree flat fan patterns.
- > 110 degree flat fan pattern. Overlap required to ensure uniform distribution on the target.

FLOW RATE CHART

Color	ISO code	Mesh	Nozzle	(psi)	gpm	Gallons / acre - nozzle spacing: 20 inches									
						4 mph	5 mph	6 mph	8 mph	10 mph	12 mph	14 mph	16 mph	20 mph	
ORANGE	AVI-TWIN 11001	100	VC	40	0.10	7.4	5.9	5.0	3.7	3.0	2.5	2.1	1.9	1.5	
				50	0.11	8.2	6.5	5.4	4.1	3.3	2.7	2.3	2.0	1.6	
				60	0.12	8.9	7.1	5.9	4.5	3.6	3.0	2.5	2.2	1.8	
				75	0.14	10.4	8.3	6.9	5.2	4.2	3.5	3.0	2.6	2.1	
GREEN	AVI-TWIN 110015	100	VC	40	0.15	11.1	8.9	7.4	5.6	4.5	3.7	3.2	2.8	2.2	
				50	0.17	12.7	10.2	8.5	6.3	5.1	4.2	3.6	3.2	2.5	
				60	0.18	13.4	10.7	8.9	6.7	5.3	4.5	3.8	3.3	2.7	
				75	0.21	15.6	12.5	10.4	7.8	6.2	5.2	4.5	3.9	3.1	
YELLOW	AVI-TWIN 11002	100	VC	40	0.20	14.9	11.9	9.9	7.4	5.9	5.0	4.2	3.7	3.0	
				50	0.22	16.3	13.1	10.9	8.2	6.5	5.4	4.7	4.1	3.3	
				60	0.24	17.8	14.3	11.9	8.9	7.1	5.9	5.1	4.5	3.6	
				75	0.27	20.0	16.0	13.4	10.0	8.0	6.7	5.7	5.0	4.0	
PURPLE	AVI-TWIN 110025	50	VC	40	0.25	18.6	14.9	12.4	9.3	7.4	6.2	5.3	4.6	3.7	
				50	0.28	20.8	16.6	13.9	10.4	8.3	6.9	5.9	5.2	4.2	
				60	0.31	23.3	18.7	15.5	11.7	9.3	7.8	6.7	5.8	4.7	
				75	0.34	25.2	20.2	16.8	12.6	10.1	8.4	7.2	6.3	5.0	
BLUE	AVI-TWIN 11003	50	VC	40	0.30	22.3	17.8	14.9	11.1	8.9	7.4	6.4	5.6	4.5	
				50	0.34	25.5	20.4	17.0	12.7	10.2	8.5	7.3	6.4	5.1	
				60	0.37	27.5	22.0	18.3	13.7	11.0	9.2	7.8	6.9	5.5	
				75	0.41	30.4	24.4	20.3	15.2	12.2	10.1	8.7	7.6	6.1	
RED	AVI-TWIN 11004	50	VC	40	0.40	29.7	23.8	19.8	14.9	11.9	9.9	8.5	7.4	5.9	
				50	0.45	33.4	26.7	22.3	16.7	13.4	11.1	9.5	8.4	6.7	
				60	0.49	36.4	29.1	24.3	18.2	14.6	12.1	10.4	9.1	7.3	
				75	0.55	40.8	32.7	27.2	20.4	16.3	13.6	11.7	10.2	8.2	
BROWN	AVI-TWIN 11005	50	VC	40	0.50	37.1	29.7	24.8	18.6	14.9	12.4	10.6	9.3	7.4	
				50	0.56	41.6	33.3	27.7	20.8	16.6	13.9	11.9	10.4	8.3	
				60	0.61	45.3	36.2	30.2	22.6	18.1	15.1	12.9	11.3	9.1	
				75	0.68	50.5	40.4	33.7	25.2	20.2	16.8	14.4	12.6	10.1	
GREY	AVI-TWIN 11006	50	VC	40	0.60	44.6	35.6	29.7	22.3	17.8	14.9	12.7	11.1	8.9	
				50	0.67	49.7	39.8	33.2	24.9	19.9	16.6	14.2	12.4	9.9	
				60	0.73	54.2	43.4	36.1	27.1	21.7	18.1	15.5	13.6	10.8	
				75	0.82	60.9	48.7	40.6	30.4	24.4	20.3	17.4	15.2	12.2	
				90	0.90	66.8	53.5	44.6	33.4	26.7	22.3	19.1	16.7	13.4	

APPLICATIONS

All types of treatment (systemic and contact products). Designed to be used over a wide range of pressures (from 40 to 80 psi).



40-80 psi

