

ISO

Dimensions: 8 mm



ISO color code



BROADCAST APPLICATIONS

catalog 2020

ALBUZ

# CVI 110°

Low pressure  
Air induction  
flat fan spray nozzle

## MAIN CHARACTERISTICS

- › Designed to be used over a wide range of pressures (from 20 to 60 psi).
- › Pink ALBUZ® ceramic orifice (excellent precision and high wear resistance).
- › 110 degree flat fan pattern. Overlap required to ensure uniform distribution on the target.
- › Designed for all types of nozzle bodies, using the same cap as ISO nozzles (for example: AXI).

## SPECIFIC CHARACTERISTICS

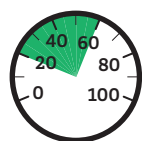
- › Air induction nozzle (venturi system) : sprays large drops filled with air bubbles, which do not drift and burst to form finer droplets on contact with the plant.
- › Almost totally eliminates drift, while increasing the number of impacts (excellent coverage of the treated zone).
- › Anti-clogging design and double air-intake orifice.
- › Compact design (0.86 inch length) adapted to all booms and nozzle bodies.
- › **Minimum height boom recommended: 20 inches.**
- › **Minimum pressure : 20 psi.**

## FLOW RATE CHART

Color	ISO code	Mesh	Pressure (psi)	Drop	gpm	Gallons / acre - nozzle spacing: 20 inches							
						4 mph	5 mph	6 mph	8 mph	10 mph	12 mph	16 mph	20 mph
GREEN	CVI 110015	100	20	XC	0.11	8.2	6.5	5.4	4.1	3.3	2.7	2.0	1.6
			30	XC	0.13	9.9	7.9	6.6	4.9	4.0	3.3	2.5	2.0
			40	VC	0.15	11.1	8.9	7.4	5.6	4.5	3.7	2.8	2.2
			50	VC	0.17	12.7	10.2	8.5	6.3	5.1	4.2	3.2	2.5
			60	VC	0.18	13.4	10.7	8.9	6.7	5.3	4.5	3.3	2.7
			75	VC	0.21	15.6	12.5	10.4	7.8	6.2	5.2	3.9	3.1
YELLOW	CVI 11002	100	20	XC	0.14	10.4	8.3	6.9	5.2	4.2	3.5	2.6	2.1
			30	XC	0.17	12.6	10.1	8.4	6.3	5.0	4.2	3.2	2.5
			40	XC	0.20	14.9	11.9	9.9	7.4	5.9	5.0	3.7	3.0
			50	XC	0.22	16.3	13.1	10.9	8.2	6.5	5.4	4.1	3.3
			60	VC	0.24	17.8	14.3	11.9	8.9	7.1	5.9	4.5	3.6
			75	C	0.27	20.0	16.0	13.4	10.0	8.0	6.7	5.0	4.0
PURPLE	CVI 110025	50	20	XC	0.18	13.4	10.7	8.9	6.7	5.3	4.5	3.3	2.7
			30	XC	0.22	16.5	13.2	11.0	8.2	6.6	5.5	4.1	3.3
			40	XC	0.25	18.6	14.9	12.4	9.3	7.4	6.2	4.6	3.7
			50	XC	0.28	20.8	16.6	13.9	10.4	8.3	6.9	5.2	4.2
			60	VC	0.31	23.3	18.7	15.5	11.7	9.3	7.8	5.8	4.7
			75	C	0.34	25.2	20.2	16.8	12.6	10.1	8.4	6.3	5.0
BLUE	CVI 11003	50	20	XC	0.21	15.6	12.5	10.4	7.8	6.2	5.2	3.9	3.1
			30	XC	0.26	19.3	15.4	12.9	9.7	7.7	6.4	4.8	3.9
			40	XC	0.30	22.3	17.8	14.9	11.1	8.9	7.4	5.6	4.5
			50	VC	0.34	25.5	20.4	17.0	12.7	10.2	8.5	6.4	5.1
			60	C	0.37	27.5	22.0	18.3	13.7	11.0	9.2	6.9	5.5
			75	C	0.41	30.4	24.4	20.3	15.2	12.2	10.1	7.6	6.1
RED	CVI 11004	50	20	XC	0.28	20.8	16.6	13.9	10.4	8.3	6.9	5.2	4.2
			30	XC	0.35	26.3	21.0	17.5	13.1	10.5	8.8	6.6	5.3
			40	XC	0.40	29.7	23.8	19.8	14.9	11.9	9.9	7.4	5.9
			50	VC	0.45	33.4	26.7	22.3	16.7	13.4	11.1	8.4	6.7
			60	C	0.49	36.4	29.1	24.3	18.2	14.6	12.1	9.1	7.3
			75	C	0.55	40.8	32.7	27.2	20.4	16.3	13.6	10.2	8.2
BROWN	CVI 11005	50	20	UC	0.35	26.0	20.8	17.3	13.0	10.4	8.7	6.5	5.2
			30	XC	0.43	31.9	25.5	21.3	16.0	12.8	10.6	8.0	6.4
			40	XC	0.50	37.1	29.7	24.8	18.6	14.9	12.4	9.3	7.4
			50	VC	0.56	41.6	33.3	27.7	20.8	16.6	13.9	10.4	8.3
			60	C	0.61	45.3	36.2	30.2	22.6	18.1	15.1	11.3	9.1
			75	C	0.68	50.5	40.4	33.7	25.2	20.2	16.8	12.6	10.1
			90	C	0.75	55.7	44.6	37.1	27.8	22.3	18.6	13.9	11.1

## APPLICATIONS

All types of treatments (systemic and contact products) including liquid fertilizers.



20-60 psi



110°

