

BOOMLESS NOZZLES

TURBODROP® BOOM85TD



Boom85TD

TURBODROP® BOOM40TD



Boom40TD

Boomless Air Injection Nozzles

The Boom TD is a pair of air injected boomless nozzles designed to be used where a boom would be impractical, such as spraying pasture or other rough ground. Other versions of this nozzle type are also possible for roadside spraying, etc. The TurboDrop injector improves the overall patternation of the boomless nozzle, as well as dramatically reducing spray drift.

Mount nozzles at 36-48" height, with enough overlap between the nozzles to prevent streaking. Spray swath may change with changes in pressure.

Boom85TD Application Rate: GPA @ 42" height (16' swath)

Pressure	Flow	Swath Width	Speed (mph)												
			3	4	5	6	7	8	9	10	11	12	13	14	15
30 psi	7.5 gpm	16 ft.	77.3	58.0	46.4	38.7	33.1	29.0	25.8	23.2	21.1	19.3	17.8	16.6	15.5
40 psi	8.5 gpm	16 ft.	87.7	65.7	52.6	43.8	37.6	32.9	29.2	26.3	23.9	21.9	20.2	18.8	17.5
50 psi*	9.5 gpm	16 ft.	98.0	73.5	58.8	49.0	42.0	36.7	32.7	29.4	26.7	24.5	22.6	21.0	19.6
60 psi*	10.4 gpm	16 ft.	107.3	80.4	64.4	53.6	46.0	40.2	35.8	32.2	29.3	26.8	24.8	23.0	21.5

Boom40TD Application Rate: GPA @ 42" height (13' swath)

Pressure	Flow	Swath Width	Speed (mph)												
			3	4	5	6	7	8	9	10	11	12	13	14	15
30 psi	3.5 gpm	13 ft.	44.4	33.3	26.7	22.2	19.0	16.7	14.8	13.3	12.1	11.1	10.3	9.5	8.9
40 psi	4.0 gpm	13 ft.	50.8	38.1	30.5	25.4	21.8	19.0	16.9	15.2	13.8	12.7	11.7	10.9	10.2
50 psi*	4.5 gpm	13 ft.	57.1	42.8	34.3	28.6	24.5	21.4	19.0	17.1	15.6	14.3	13.2	12.2	11.4
60 psi*	5.0 gpm	13 ft.	63.5	47.6	38.1	31.7	27.2	23.8	21.2	19.0	17.3	15.9	14.6	13.6	12.7

Materials of Construction: Stainless Steel

NOZZLES AND ACCESSORIES

VENTURI



The heart of the TurboDrop® nozzle; meters flow rate and injects air. Available in all poly or poly with ceramic metering orifice (for extended wear life).

TDXLV005
TDXLV/TDVC01
TDXLV/TDVC015
TDXLV/TDVC02
TDXLV/TDVC025
TDXLV/TDVC03
TDXLV/TDVC04
TDXLV/TDVC05
TDXLV/TDVC06
TDXLV/TDVC08
TDXLV/TDVC10
TDXLV15

HARDI ADAPTER GASKET



Allows sprayers with Hardi nozzle bodies to use TurboDrop® nozzles with no additional adapter.

GH170

EPDM construction.

QUICK HOLLOW CONE SPRAY NOZZLE



Quarter turn quick connect, hollow cone tip. For use with TurboDrop® Venturi or as a stand alone hollow cone tip.

QHC013
QHC023
QHC045
QHC068

Polyacetal with EPDM seat gasket.

DIFFUSER

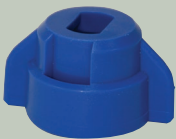


Use with 80° and narrower angle flat fan tips on TurboDrop® Venturi. Also with 110° tips that are more than double the size of the Venturi. Requires Greenleaf cap.

DIF4

EPDM and Polyacetal construction.

CAP



Polyacetal cap. ISO color coded. Polyacetal construction.

Polyacetal with EPDM seat gasket.

C01
C015
C02
C025
C03
C04
C05
C06
C08
C10

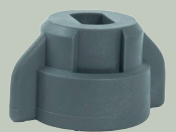
DF O-RING



For use with AirMix® nozzles when installed in the DualFan (DF) cap.

DF-ORAA

ACID-RESISTANT CAP

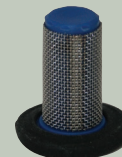


Polypropylene cap.

Polypropylene with EPDM seat gasket.

C06PP

GRIPPER TIP STRAINER



Tip strainer with an integral seat gasket. Available in 24, 50, or 100 mesh variants.

GTS24M
GTS50M
GTS100M

Polyacetal with stainless steel screen and EPDM gasket.

DUALFAN CAP



Allows DualFan spraying (10° and 50°) with standard tips, AirMix® nozzles, or as part of TurboDrop® DualFan nozzles.

CADF

EXTENSION ADAPTER



When used with DualFan nozzle, lowers the nozzle approximately 1" to clear obstructions on certain sprayers.

EXAD

GASKETS

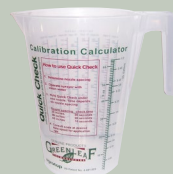


One-hole gasket.

EPDM construction.

G120
G125

QUICK CHECK CALIBRATION CALCULATOR



Quickly and easily measures the amount of liquid being dispersed through spray nozzles, and calculates application rates. Can also be used to adjust nozzle flow rates, determine nozzle accuracy, and evaluate line pressure losses.

QC02